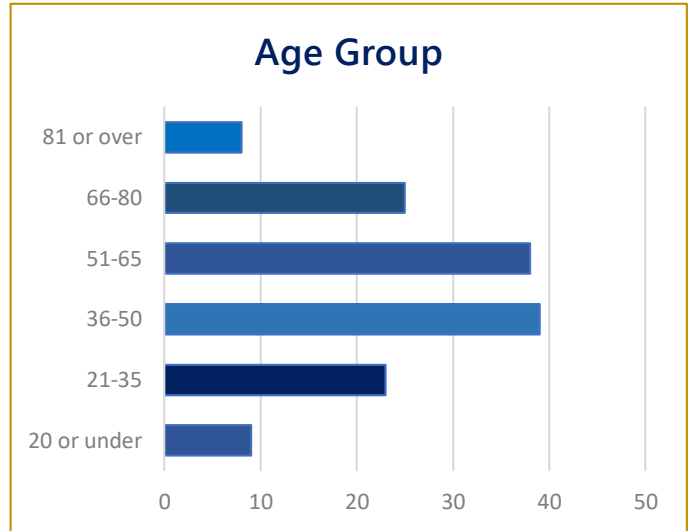
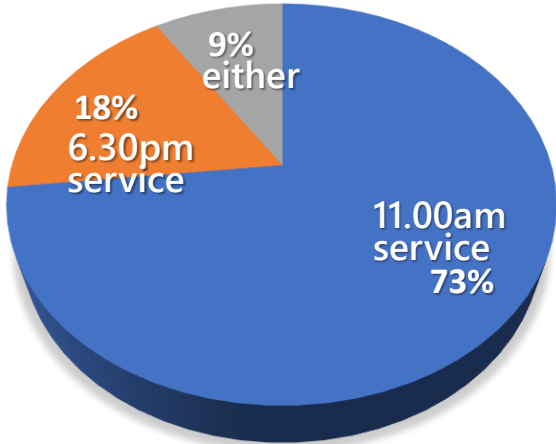


KYCKYN Church Questionnaire Results



Total number in survey: **142**
55 male (39%) | **87** female (61%)

Which church service do you usually attend?

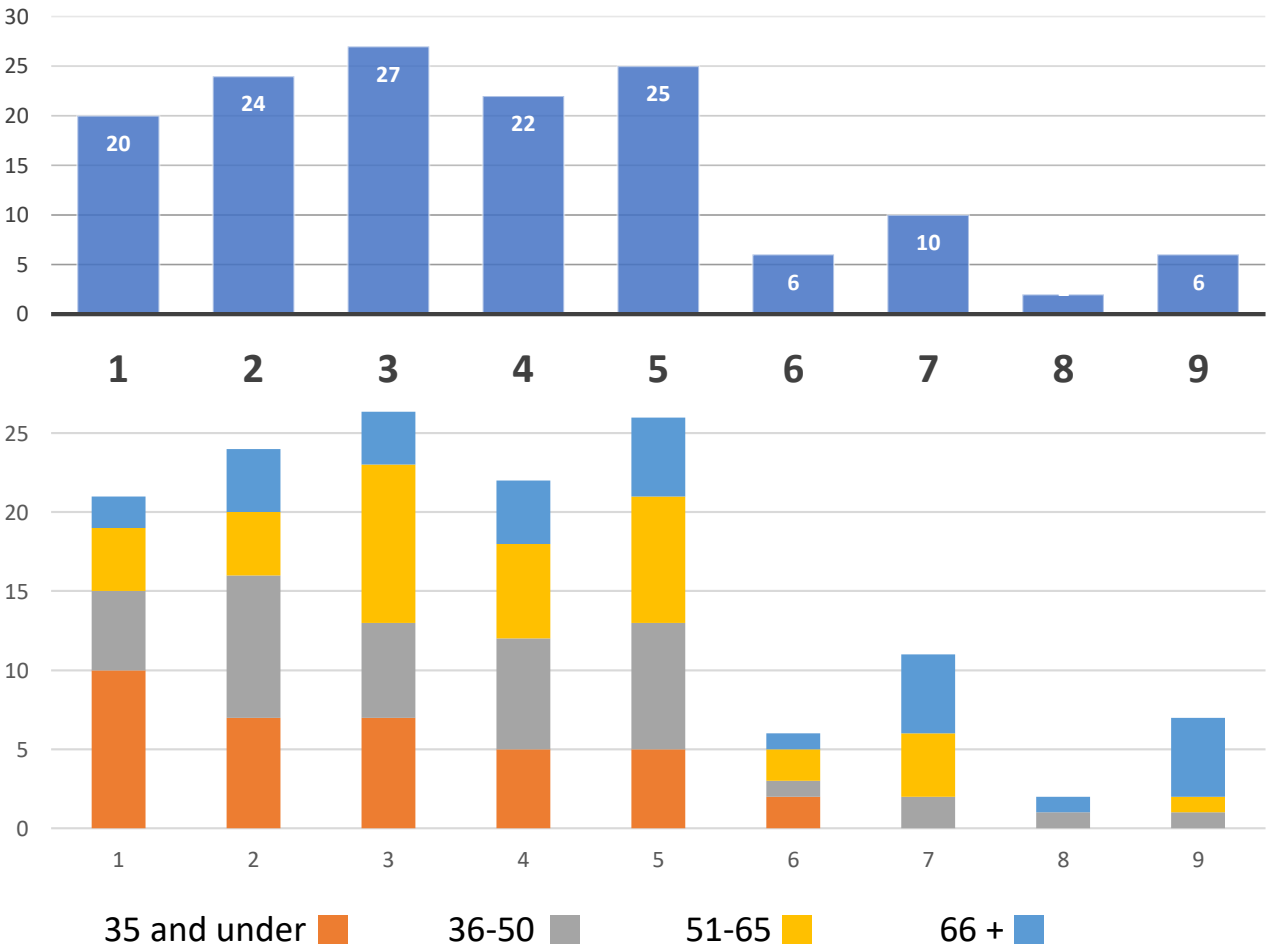


Are you aware that our parish has recently increased in size?

Yes 77% (109) **No** 12% (17) **Vaguely** 11% (16)

How connected/engaged do you feel with our geographical parish?

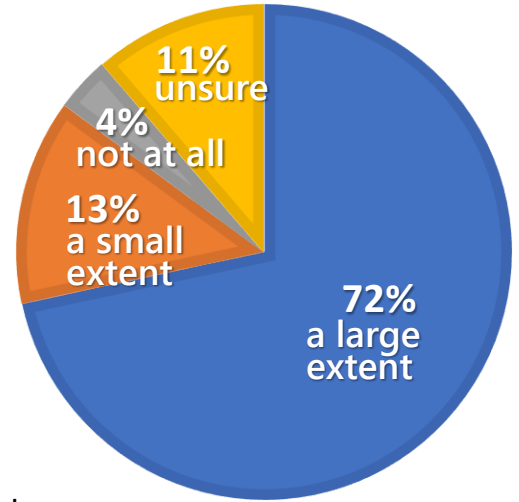
(‘1’ being *not at all*, ‘5’ being *quite*, ‘9’ being *very*)



To what extent should Holy Trinity be putting time and energy into engaging with our geographical parish?

Further comments in this answer box suggest that for many this is an important **responsibility** of the local church to serve and engage with the geographical parish. The comments can be grouped and prioritised according to number of people who said them :

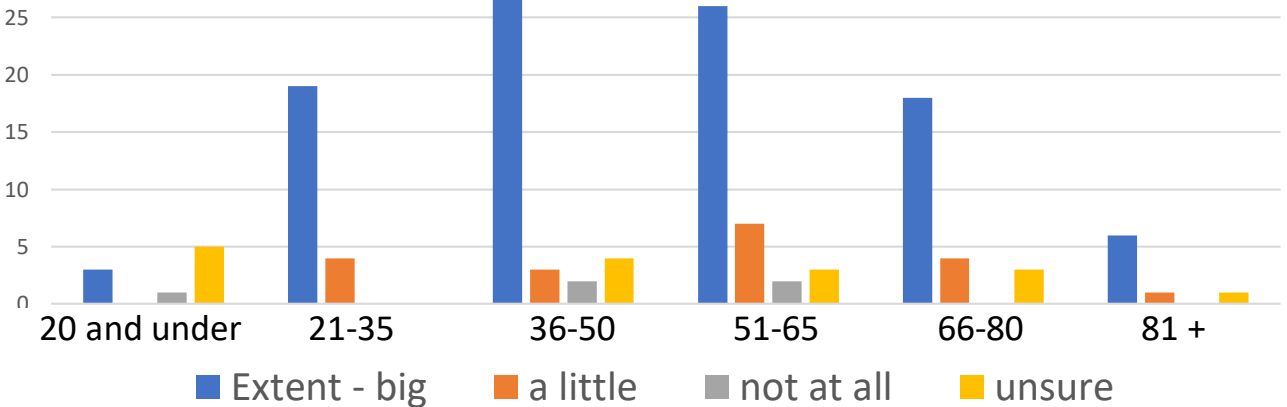
- 35** *We are here to serve the needs of the parish*
- 23** *We are spiritually responsible for our parish and community*
- 16** *The importance of raising our profile as the parish church*
- 14** *The church should be/is a community focal point*
- 3** *We serve families, children and seniors well – we need to engage with other groups as well (i.e. students etc)*



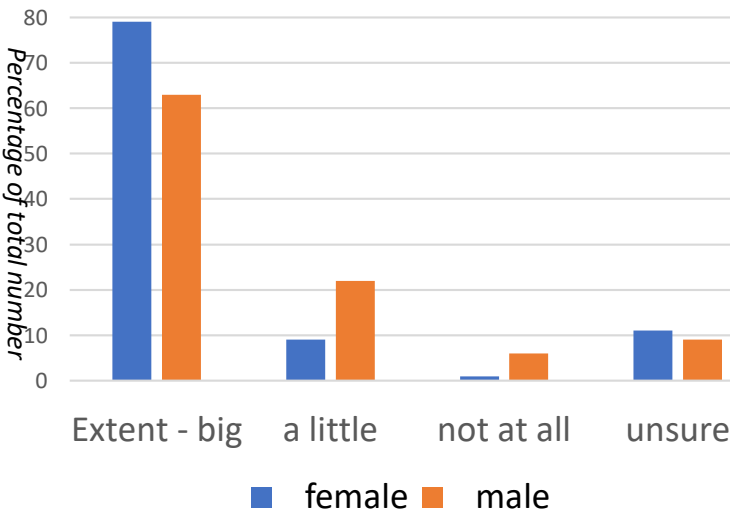
Those who were unsure or thought we should engage to a lesser or no extent said:

- 8** *Most people do not live in the parish or close by – our calling is to engage with the networks and communities where we work and live.*
- 2** *Parish boundaries are an irrelevant concept*
- 2** *Simply fulfil our duty of offering occasional offices (baptisms, weddings funerals)*

Looking at the data by **age range**:



Looking at the data by **gender split**:



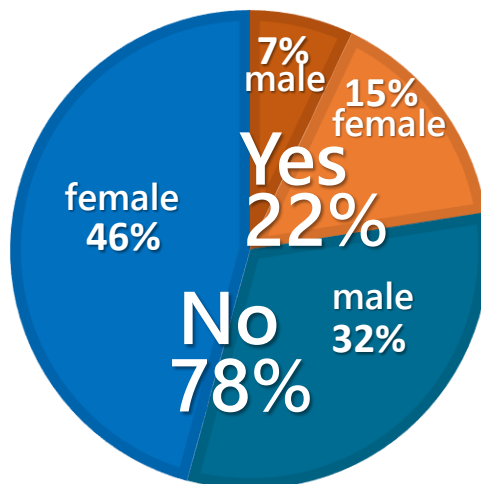
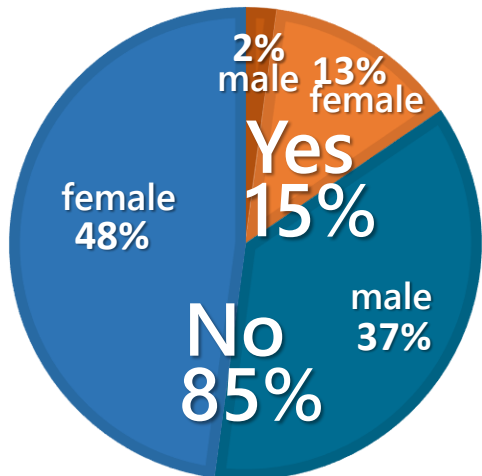
These are based on percentages rather than actual figures for easier comparison.

What is clear from all these figures is that the majority of Holy Trinity church who took part in the questionnaire believe it is important that we are investing significant time and energy into engaging with our geographical parish. How this is worked out, when 90% of us don't live in or very near the parish and whether that takes the form of awareness raising of what we already offer, or new initiatives is a key question for us to explore.

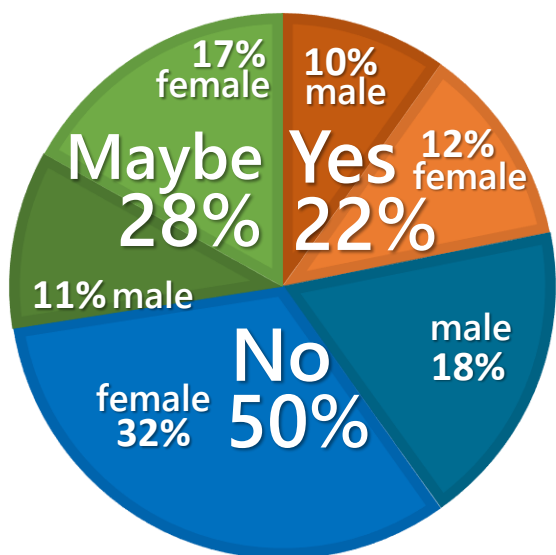
The last three questions in the questionnaire relate to our current commitments and capacity as a church to do more. Together, they form a powerful 'reality check' for us in our planning and thinking.

Do you work in the parish either in your job or as a volunteer

Do you work as a volunteer somewhere outside the parish?



If we were to start some new initiatives within the parish *that interested you*, would you have the capacity to get involved?



Based on the questionnaires, it is difficult to ascertain what 'maybe' actually means. I imagine it covers everything from a polite 'no' to a possible 'yes'.

Interestingly, half of the 'yes' answers are from those who form the 22% 'yes' from the previous question. Many indicate that they are working at capacity but could reorganise voluntary commitments to create time for new initiatives at Holy Trinity.

We carefully worded the question to include the phrase 'that interested you'. So it is important to note that those who might offer time are doing so in a conditional way.

Looking at the data by age range

